

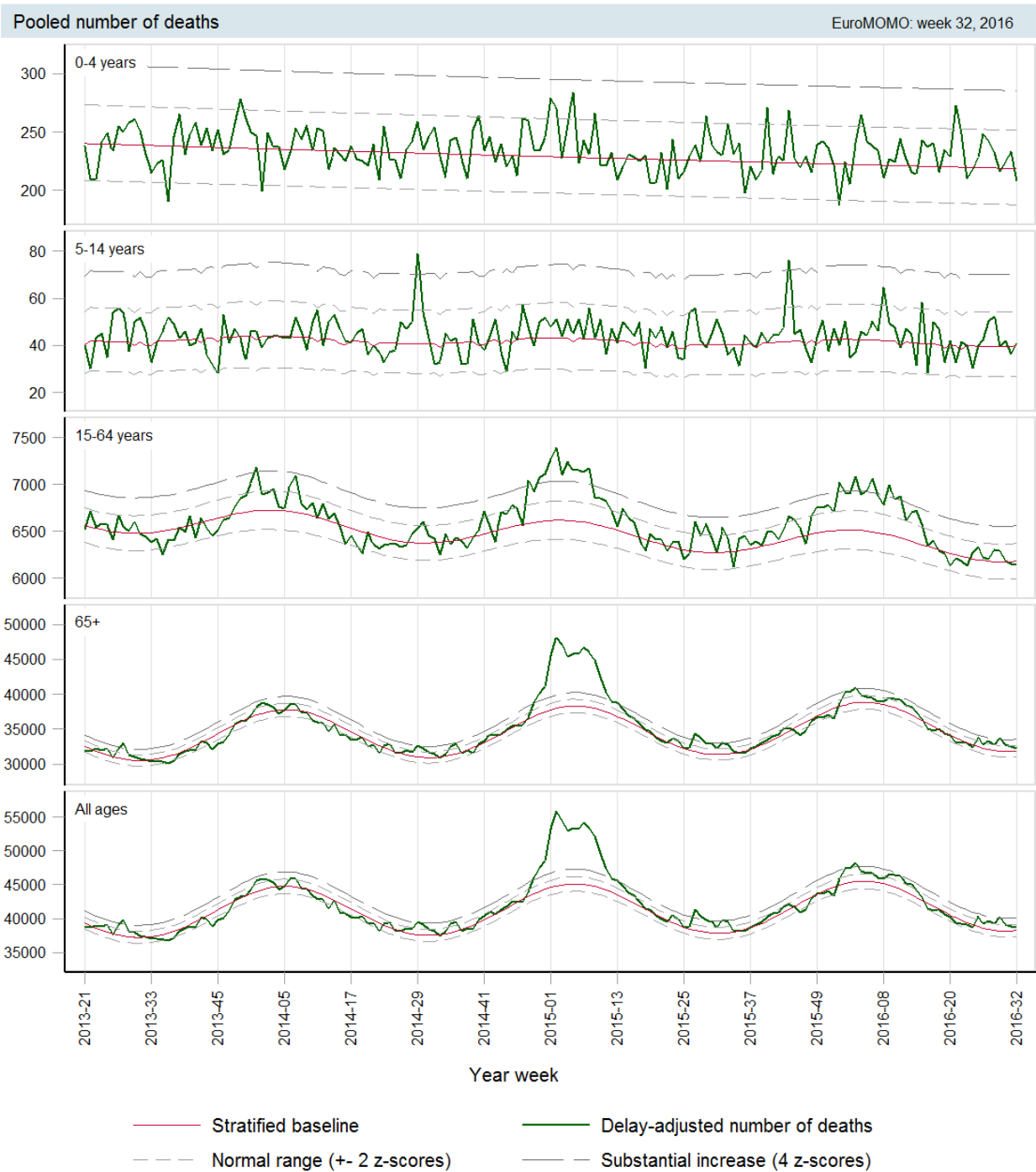
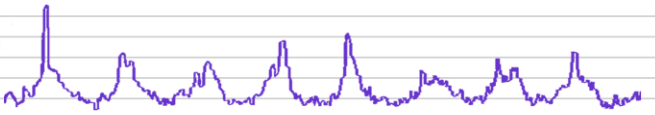
European mortality bulletin, week 32, 2016:

There has been slightly increased mortality among elderly on the Iberian peninsula over the last month. Probably associated to high temperatures over the same period

Data from 16 countries or regions* were received this week and included in the pooled analyses.

Excess mortality levels in most recent weeks may be difficult to interpret because adjustment for delayed registrations may be imprecise. Further, results of pooled analyses may vary depending on which countries were included in the weekly analyses. Pooled analyses are adjusted for variation between the included countries and for differences in the local delay in reporting. Further details are available on <http://www.euromomo.eu>

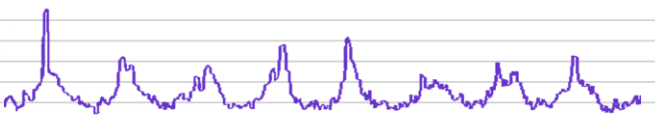
* Denmark, England (UK), Finland, France, Greece, Hungary, Ireland, Malta, the Netherlands, Norway, Portugal, Scotland (UK), Spain, Sweden, Switzerland, and Wales (UK).



Participating countries:

Denmark, Finland, France, Greece, Hungary, Ireland, Malta, Netherlands, Norway, Portugal, Spain
Sweden, Switzerland, UK (England), UK (Scotland), UK (Wales)

euroMOMO



European monitoring of excess mortality for public health action

