

**European mortality bulletin, week 13, 2016:**

The pooled analysis shows a continued pattern of an excess in all-cause mortality among the 15-64 years age group. This pattern appeared at the end of 2015, and seems to be at the same level as observed in the 2012/13 and 2014/15 winter seasons. The mortality among children below 15 years and among the elderly is within the expected levels for the season.

Data from 17 countries or regions\* were received, of these 16\*\* were included in the pooled analyses.

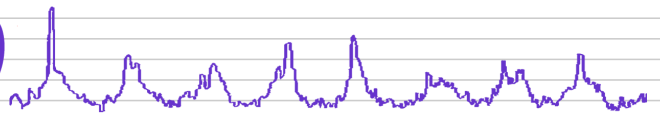
Excess mortality levels in most recent weeks may be difficult to interpret because adjustment for delayed registrations may be imprecise. Further, results of pooled analyses may vary depending on which countries were included in the weekly analyses.

Pooled analyses are adjusted for variation between the included countries and for differences in the local delay in reporting.

Further details are available on <http://www.euromomo.eu>

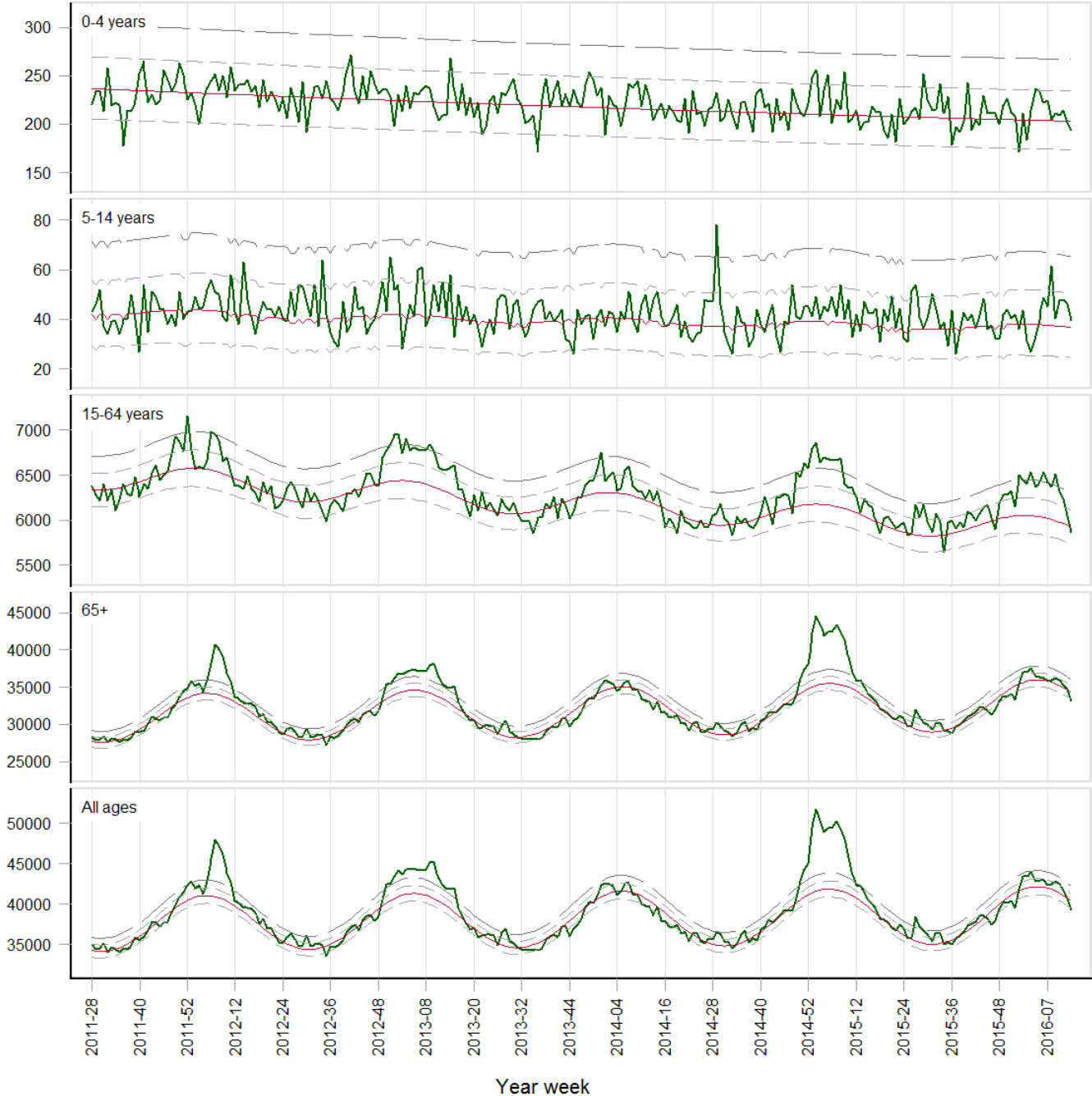
\*Denmark, England (UK), Estonia, Finland, France, Greece, Hungary, Ireland, the Netherlands, Northern Ireland (UK), Norway, Portugal, Scotland (UK), Spain, Switzerland, Sweden, and Wales (UK).

\*\* Not included in the pooled analyses: Northern Ireland (UK).



### Pooled number of deaths

EuroMOMO: week 13, 2016

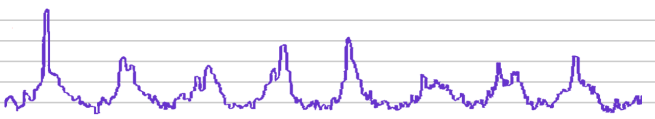


— Stratified baseline      — Delay-adjusted number of deaths  
- - - Normal range ( $\pm 2$  z-scores)      — Substantial increase (4 z-scores)

#### Participating countries:

Denmark, Estonia, Finland, France, Greece, Hungary, Ireland, Netherlands, Norway, Portugal, Spain  
 Sweden, Switzerland, UK (England), UK (Scotland), UK (Wales)

# euroMOMO



## European monitoring of excess mortality for public health action

