



### **European mortality bulletin, week 6, 2014:**

All-cause mortality has been within the normal range for all reporting countries.

Data was received from 17 countries or regions\* of these 15\*\* were included in the pooled analyses. Pooled data showed that overall all-cause mortality has been around normal levels since the end of the winter season 2012/2013, apart from peaks of excess mortality in single countries during the summer period.

Excess mortality levels in most recent weeks are difficult to interpret because adjustment for delayed registrations may be imprecise. Further, results of pooled analyses may vary dependent on which countries were included in the weekly analysis.

Pooled analyses were adjusted for variation between the included countries and for differences in the local delay in reporting.

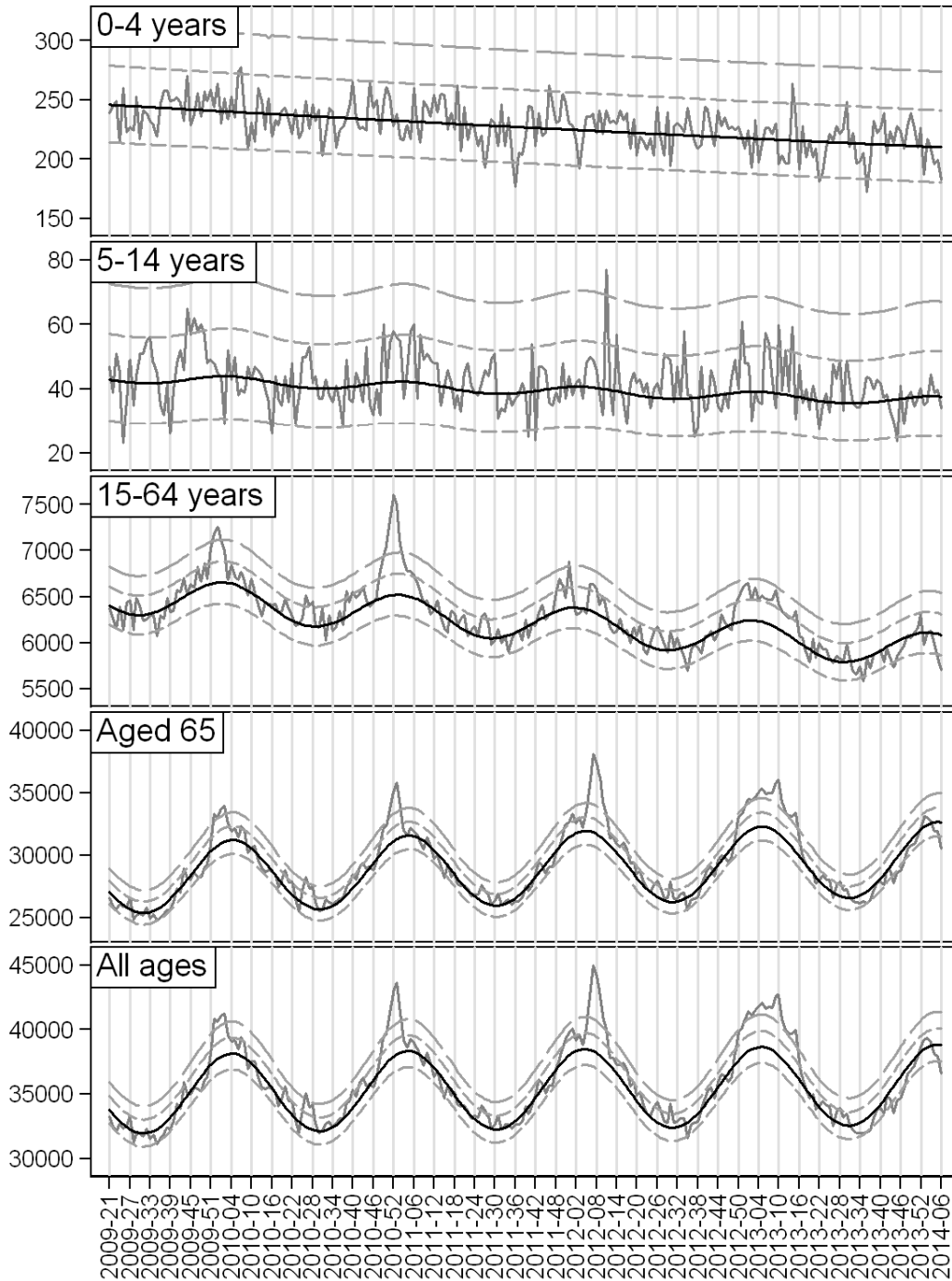
Further details are available on <http://www.euromomo.eu>.

\*Belgium, Berlin (Germany), Denmark, England (UK), Estonia, Finland, France, Greece, Hungary, Ireland, The Netherlands, Northern Ireland (UK), Portugal, Scotland (UK), Spain, Switzerland and Wales (UK).

\*\* Not included in pooled analysis: Northern Ireland (UK) and Portugal.



## Pooled number of deaths



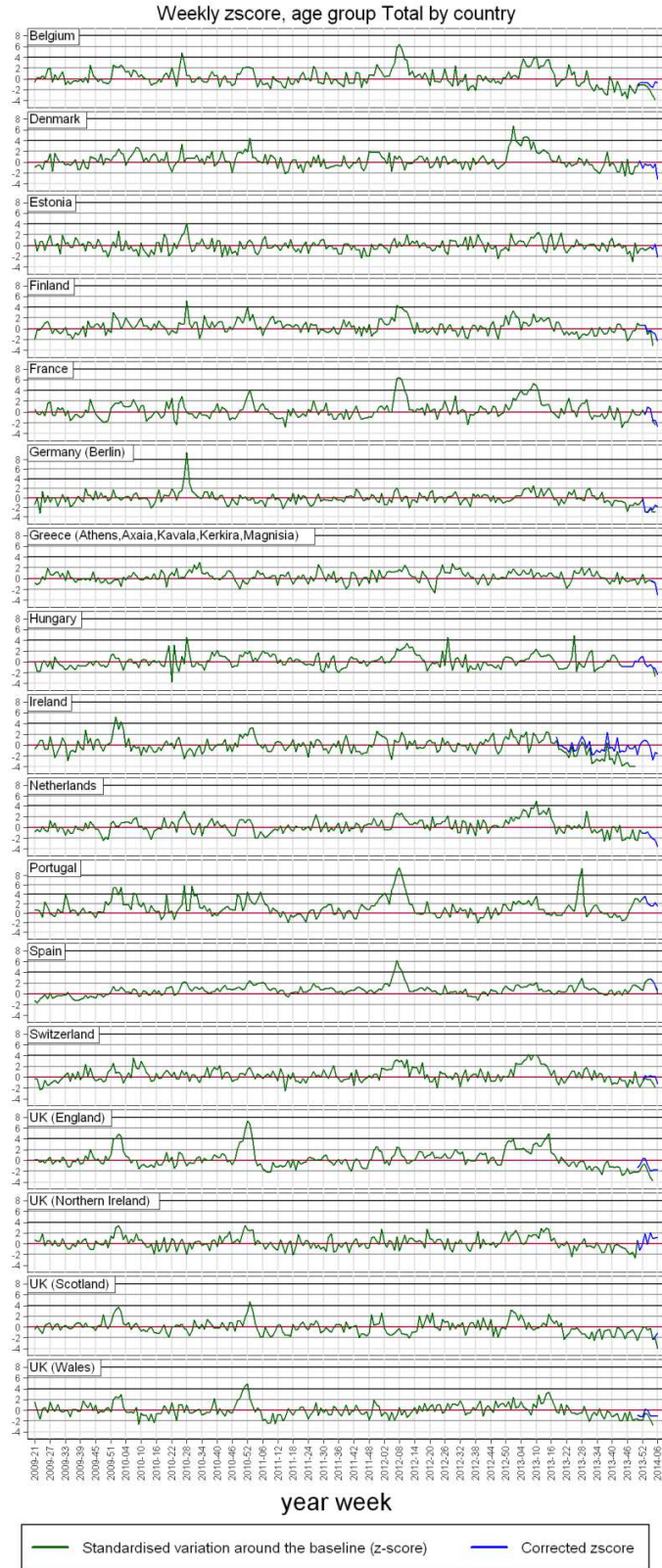
year week

Grey line: Observed delay-adjusted. Black line: Stratified baseline.  
 Quick dotted: Normal range (2 zscores). Slow dotted: Substantial increase (4 zscores)

# euroMOMO



## European monitoring of excess mortality for public health action



EuroMOMO: week 6 year 2014. z-scores below -4 has been cut off