

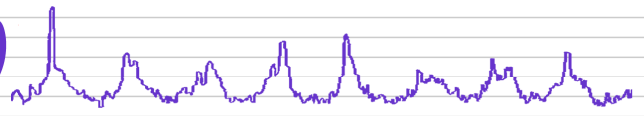
European mortality bulletin, week 19, 2013:

Pooled analysis of week 19/2013 data, based on 15 countries or regions, showed a sustained peak of excess all-cause mortality among those aged 65 years and older. Excess mortality started in week 01/2013, peaked in week 10/2013 and has since week 17/2013 been around normal levels. Cumulative winter excess mortality among older people (cumulated from week 40/2012 to week 19/2013) showed excess mortality levels higher than those seen in the past three winters.

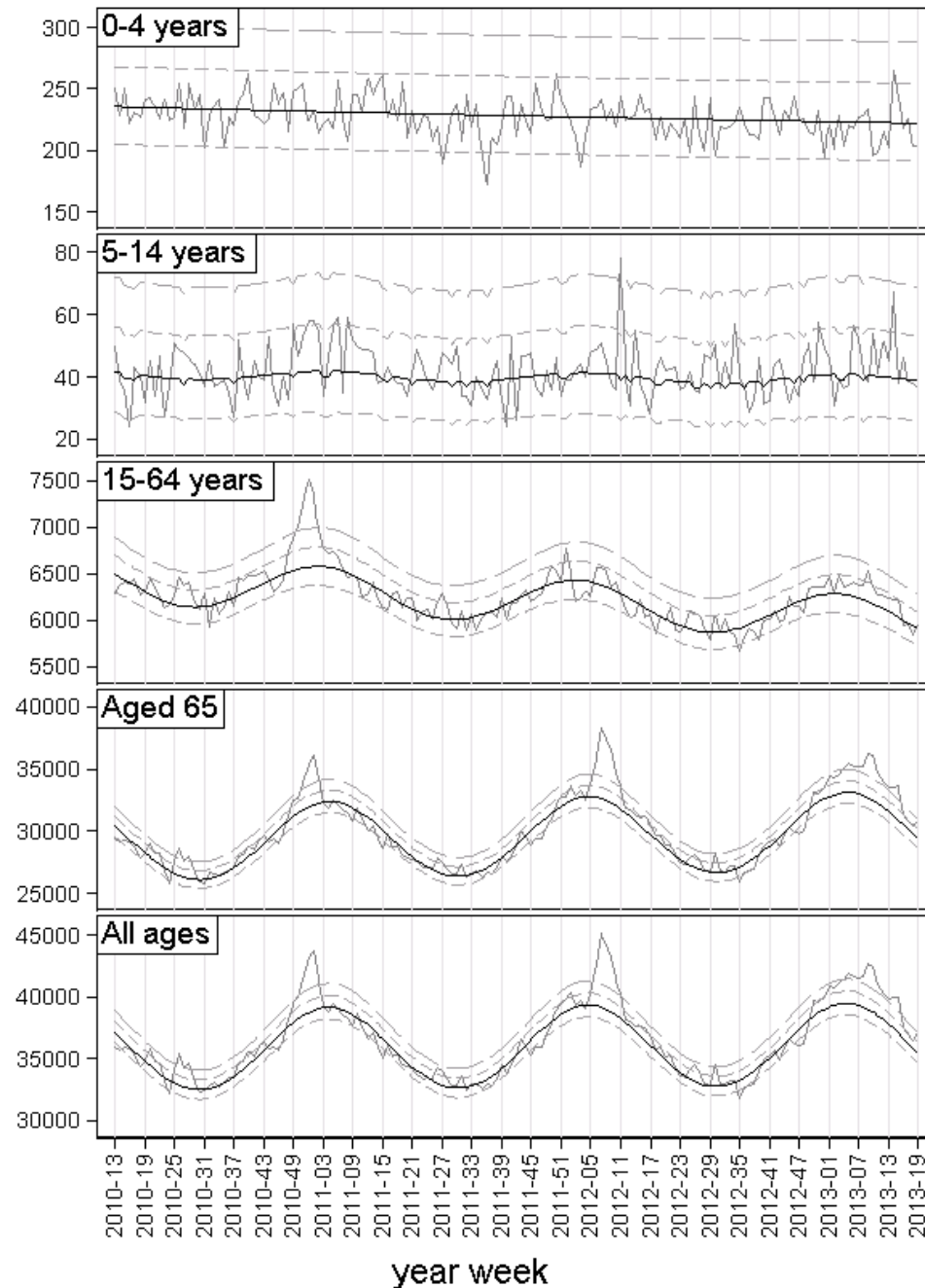
The mortality pattern may be explained by the pattern of influenza activity this season in Europe, but other factors such as the long, cold winter may also have contributed.

Pooled analysis was adjusted for variation between the included countries and for differences in the local delay in reporting. Further details are available on <http://www.euromomo.eu/results/pooled.html>

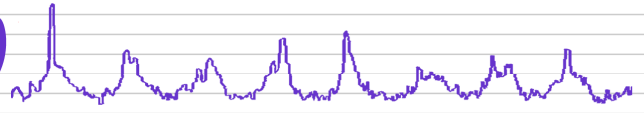
Excess mortality levels in most recent weeks are difficult to interpret because adjustment for delayed registrations may be imprecise. Further, results of pooled analysis may vary dependent on which countries are included in the weekly analysis



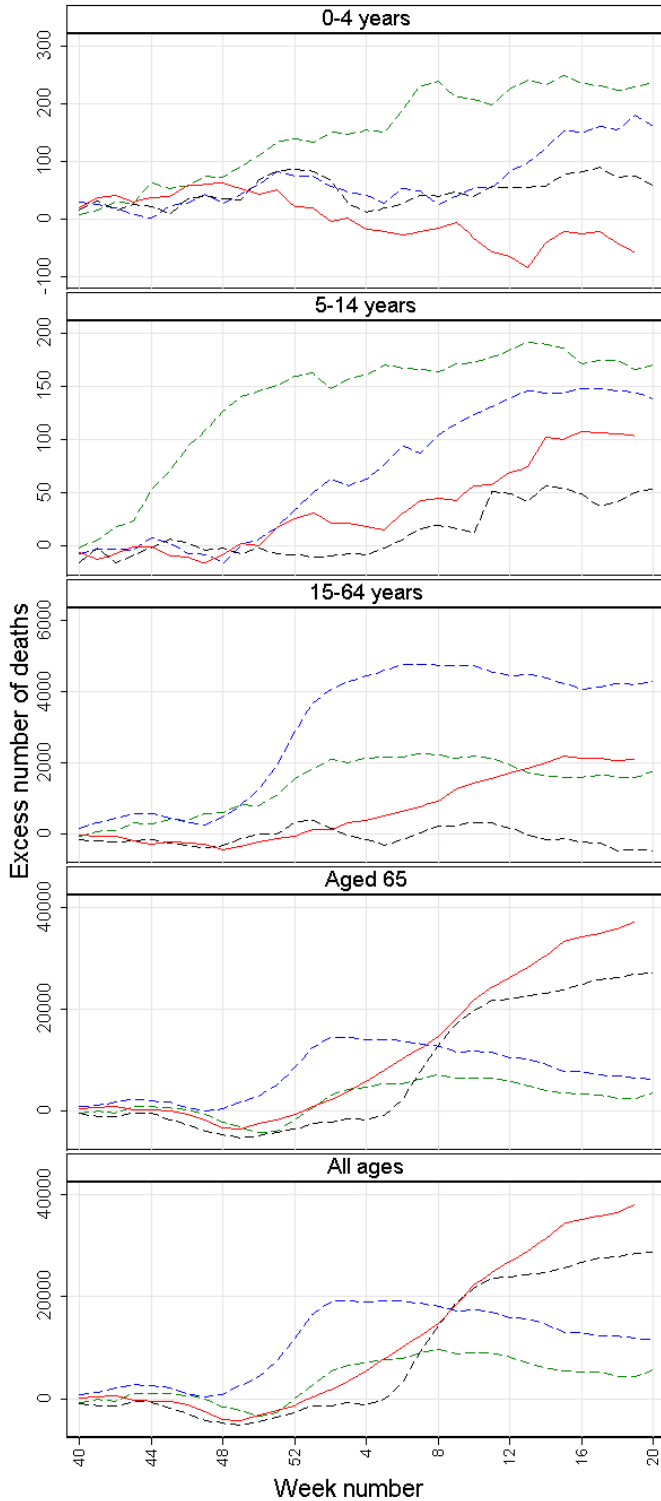
Pooled number of deaths



Grey line: Observed delay-adjusted. Black line: Stratified baseline.
 Quick dotted: Normal range (2 zscores). Slow dotted: Substantial increase (4 zscores)
 EuroMOMO: week 19 year 2013



Pooled cumulated winter excess deaths



Red line: 2012/13. Dotted lines: Green 2009/10. Blue 2010/11. Black 2011/12
EuroMOMO: week 19 year 2013