

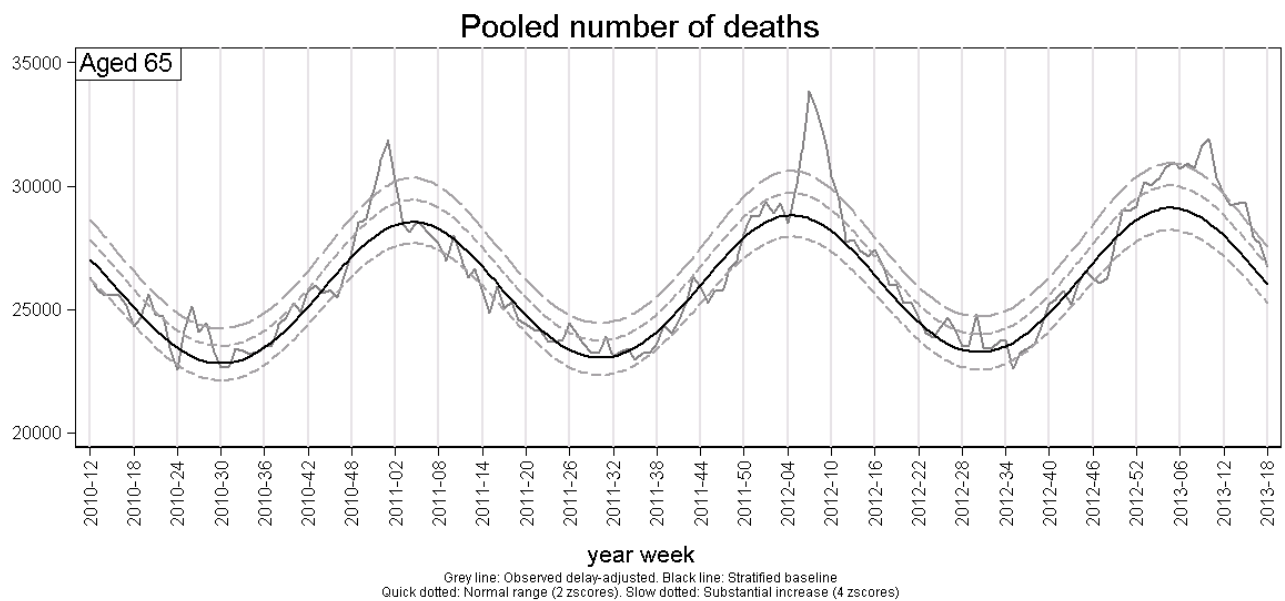
European mortality bulletin, week 18, 2013:

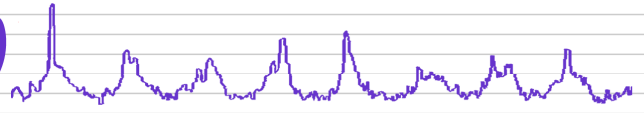
Pooled analysis of week 18/2013 data, based on 14 countries or regions, showed a sustained peak of excess all-cause mortality among those aged 65 years and older. Excess mortality started in week 01/2013, peaked in week 10/2013 and is since declining, but has not quite yet returned to normal levels. However, excess mortality levels in most recent weeks are difficult to interpret because adjustment for delayed registrations may be imprecise. Further, results of pooled analysis may vary dependent on which countries are included in the weekly analysis.

Cumulative winter excess mortality among older people (cumulated from week 40/2012 to week 18/2013) showed excess mortality levels higher than those seen in the past three winters. .

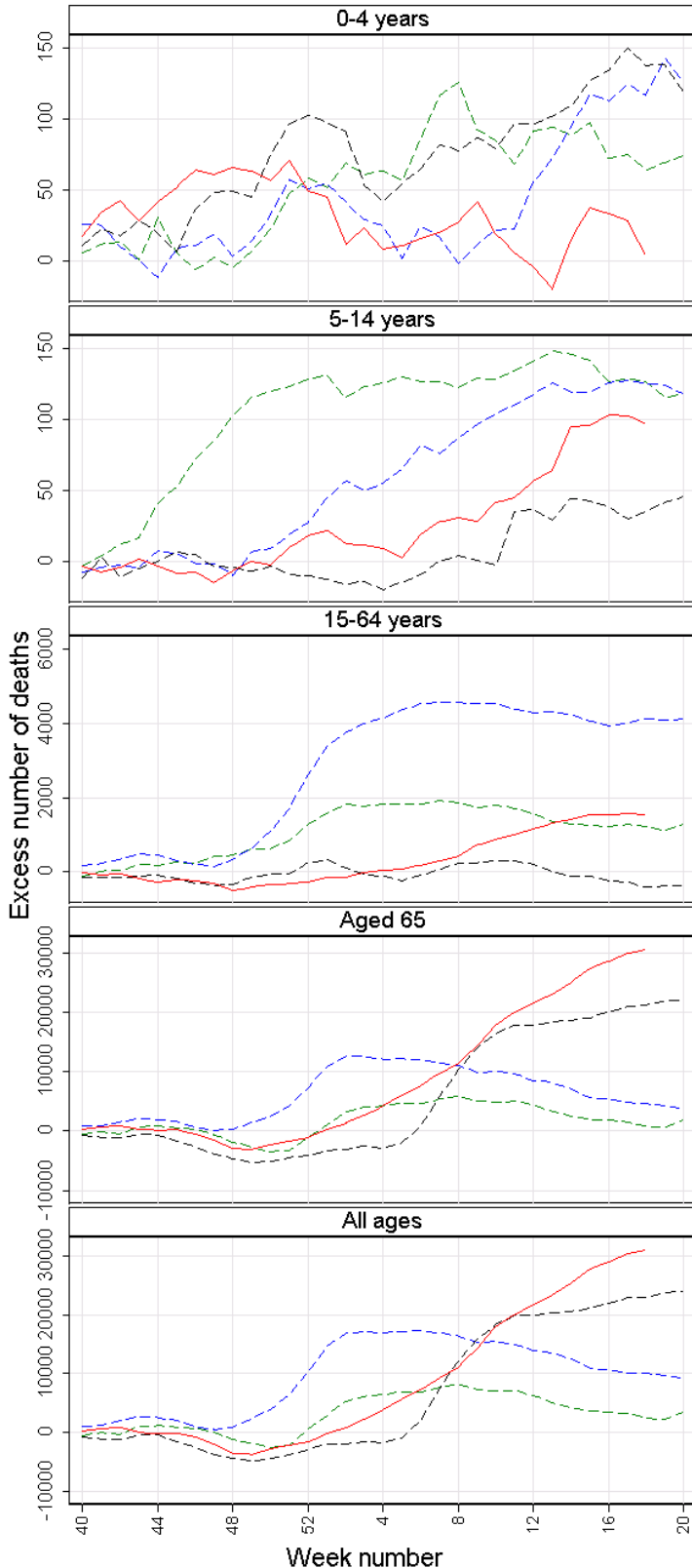
The mortality pattern may be explained by the pattern of influenza activity this season in Europe, but other factors such as the long, cold winter may also have contributed.

Pooled analysis was adjusted for variation between the included countries and for differences in the local delay in reporting. Further details are available on <http://www.euromomo.eu/results/pooled.html>





Pooled cumulated winter excess deaths



Red line: 2012/13. Dotted lines: Green 2009/10. Blue 2010/11. Black 2011/12
EuroMOMO: week 18 year 2013

euroMOMO

European monitoring of excess mortality for public health action