

European mortality bulletin, week 9, 2013:

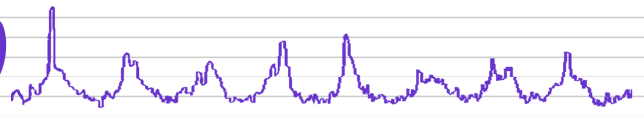
Pooled analysis of week 9/2013 data, based on 15 countries or regions, showed excess mortality among people aged 65 and older since week 01/2013: all-cause mortality was around 3 z-scores above the baseline in weeks 1,2,3 and 4/2013, and has been around 4 to 5 z-scores in week 5,6,7 and 8/2013.

No excess mortality in younger age groups has been detected so far this season. Results of pooled analysis may vary dependent on which countries are included in the weekly analysis.

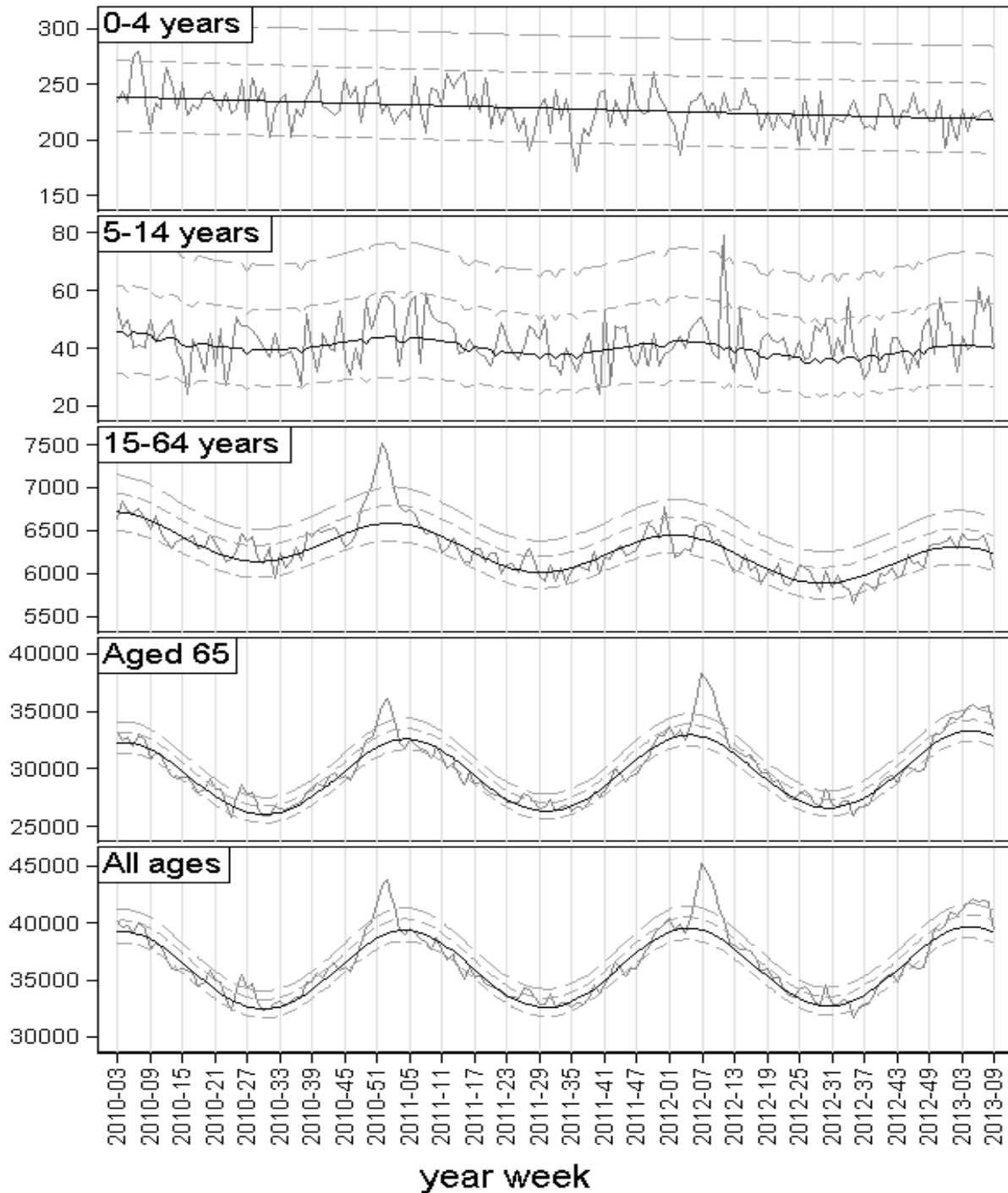
Individual country analysis showed a diverse temporal pattern of all-cause mortality in people aged 65 years and above. While in some countries mortality increased at the end of 2012 (Denmark, Ireland, Sweden, UK(England, Scotland), the increases observed in other countries started around 4 weeks later (Belgium, France, Netherlands, Switzerland). Yet other countries had no or only very moderate mortality increases so far (Finland, Germany (Berlin, Hesse), Hungary, Portugal, Spain)

In most countries winter excess mortality is, so far, moderate in comparison to previous seasons, with mortality remaining below 4-zscores above the baseline. However in Denmark, comparably high excess mortality with peak values of around 6 z-scores have been observed, this season influenza activity in Denmark has been dominated by A(H3N2) circulation.

The diverse mortality pattern may be explained by the pattern of influenza activity this season in Europe, but other factors such as extreme cold may also play a role

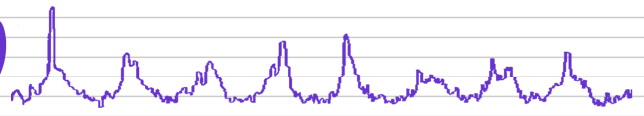


Pooled number of deaths



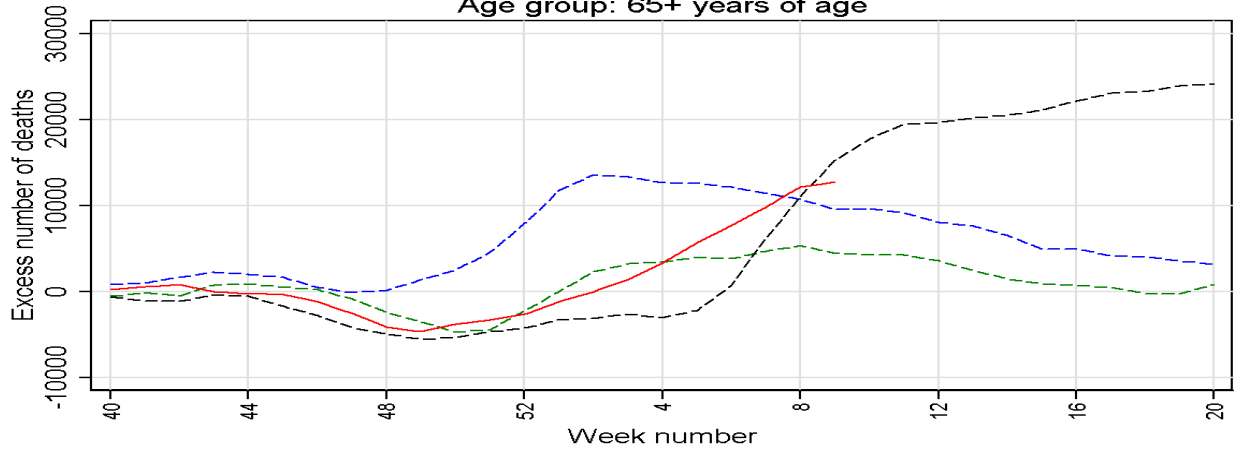
Grey line: Observed delay-adjusted. Black line: Stratified baseline.
 Quick dotted: Normal range (2 zscores). Slow dotted: Substantial increase (4 zscores)

EuroMOMO: week 9 year 2013



Pooled cumulated winter excess deaths

Age group: 65+ years of age

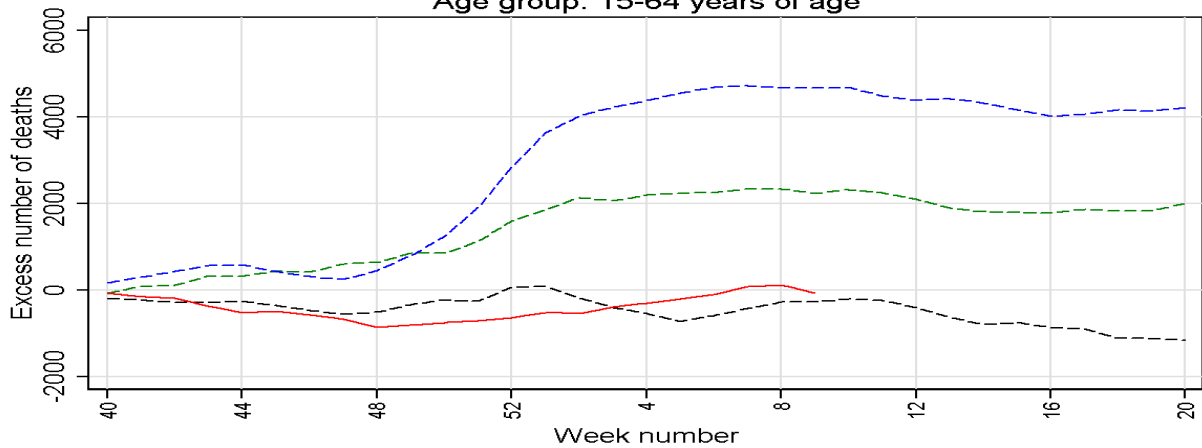


Red line: 2012/13. Dotted lines: Green 2009/10. Blue 2010/11. Black 2011/12

EuroMOMO: week 9 year 2013

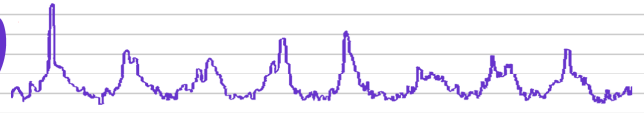
Pooled cumulated winter excess deaths

Age group: 15-64 years of age



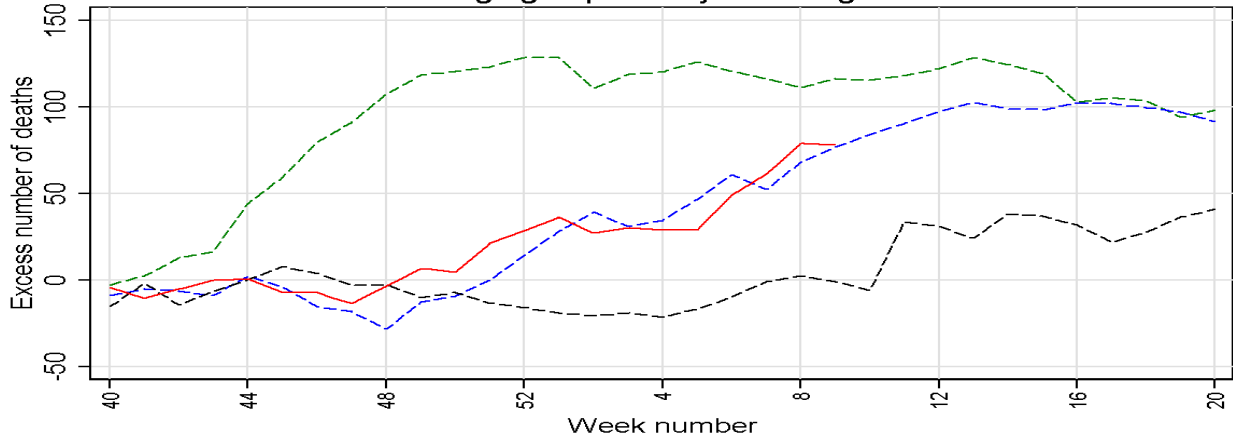
Red line: 2012/13. Dotted lines: Green 2009/10. Blue 2010/11. Black 2011/12

EuroMOMO: week 9 year 2013



Pooled cumulated winter excess deaths

Age group: 5-14 years of age

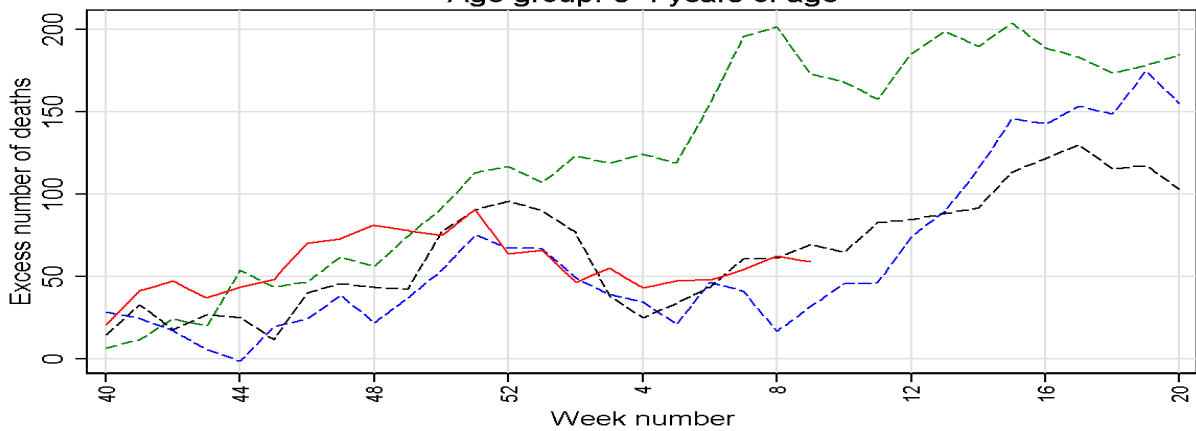


Red line: 2012/13. Dotted lines: Green 2009/10. Blue 2010/11. Black 2011/12

EuroMOMO: week 9 year 2013

Pooled cumulated winter excess deaths

Age group: 0-4 years of age



Red line: 2012/13. Dotted lines: Green 2009/10. Blue 2010/11. Black 2011/12

EuroMOMO: week 9 year 2013

Pooled analysis was adjusted for variation between the included countries and for differences in local delay of reporting. Further details are available on <http://www.euromomo.eu/results/pooled.html>