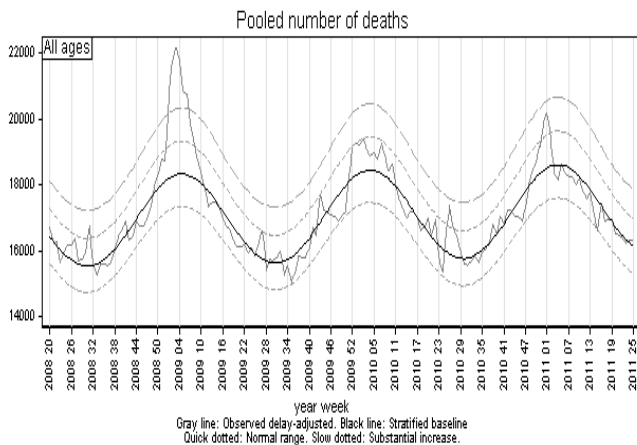
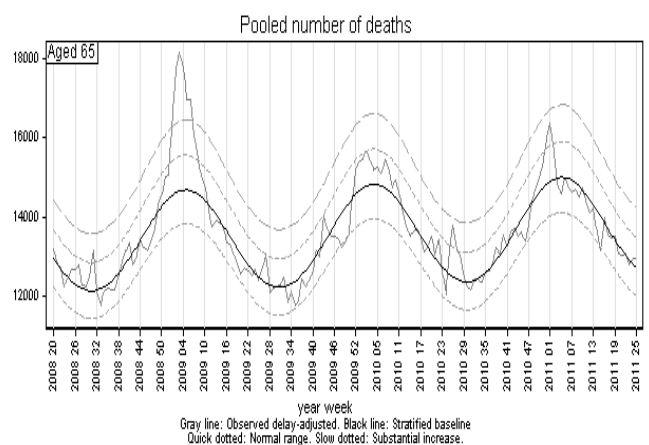


**European mortality bulletin week 25, 2011:** Mortality has since the middle of January been within the normal range for all countries. However, it has been slightly increasing for the elderly the last few weeks.

Over the last months, all-cause number of deaths, corrected for delay in local reporting of deaths, has been below 2 z-scores. There seems to be a slight increase in number of deaths among persons aged 65 in some countries. A pattern also observed previous years. However, the explanation may to some extent be linked to the adjusted for delay in registration.



BurMOM: week 25 year 2011

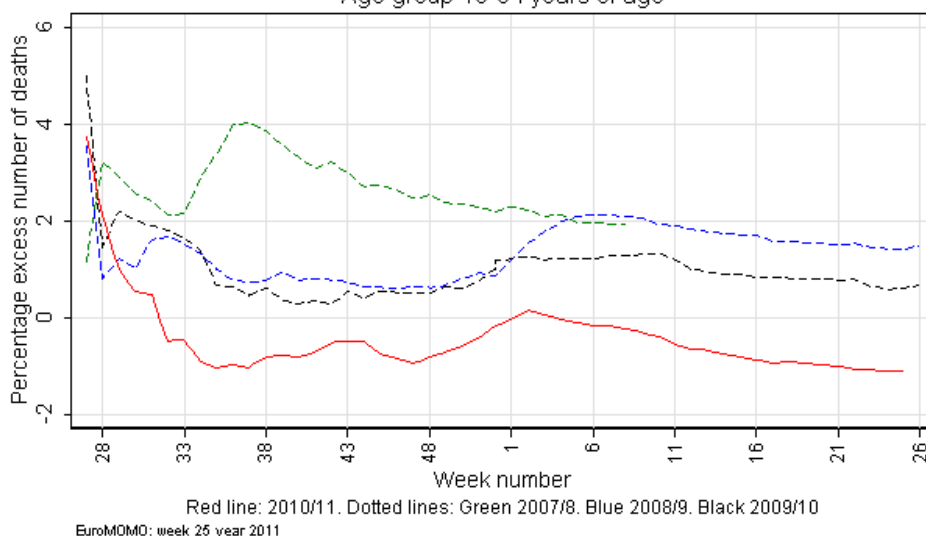


BurMOM: week 25 year 2011

Cumulated excess deaths for this season compared to previous seasons are within the same range. Among adults (15 to 64 years of age) a lower number of excess deaths compared to previous seasons seem to continue

### Pooled relative cumulated excess deaths

Age group 15-64 years of age



EuroMOM: week 25 year 2011

The analyses, based on eight countries, were adjusted for differences in local delay of reporting and heterogeneities in pattern and variation between the included countries.

Further details are available on <http://www.euromomo.eu/results/pooled.html>